

Lake Mead National Recreation Area

2005-NPS-529-P

**Monitoring of Road Conditions and
Signs**



Issues

- Approved Roads were not always well identified
 - Signs
 - Illegal roads
 - Barriers
- Road conditions could change rapidly
 - Washouts and ruts
 - Deep sand or mud



Hypothesis

- If road identification and conditions were improved, then off-road vehicle incidents would decrease



Goals

- Perform road, sign, fence, and barrier construction and maintenance
- Inform road, disturbance, and sign condition to NPS programs and management
- In cooperation with BLM, conduct standardized documentation and monitoring; align road status



Approach

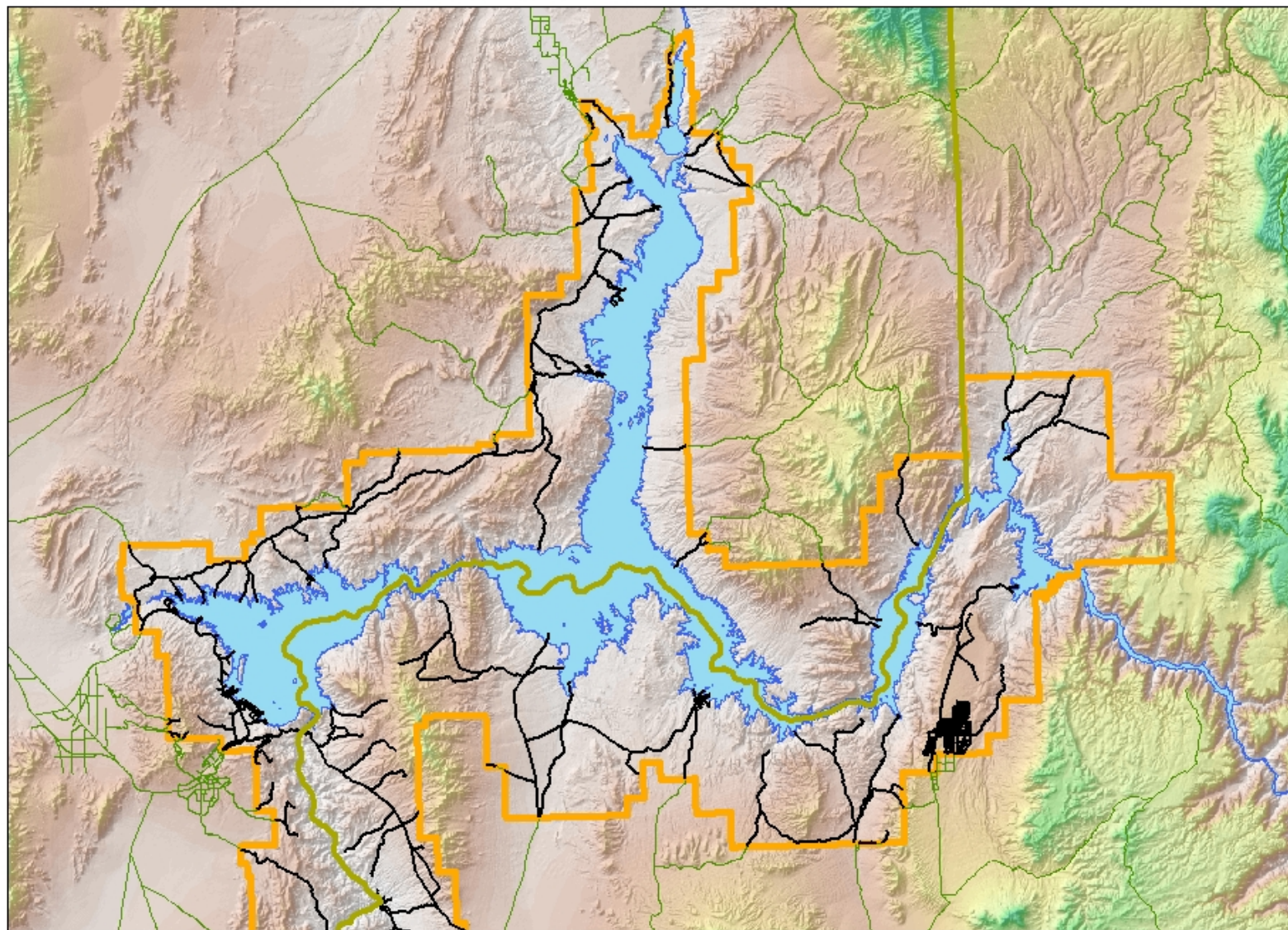
- Survey all legal roads at least quarterly to assess signage and road conditions
- Provide logistical information and data collection for Lake Mead's Restoration, Maintenance, Wilderness, and Law Enforcement programs
- Create a database with all signs and sign conditions



Mead District

Lake Mead National Recreation Area

National Park Service
U.S. Department of the Interior



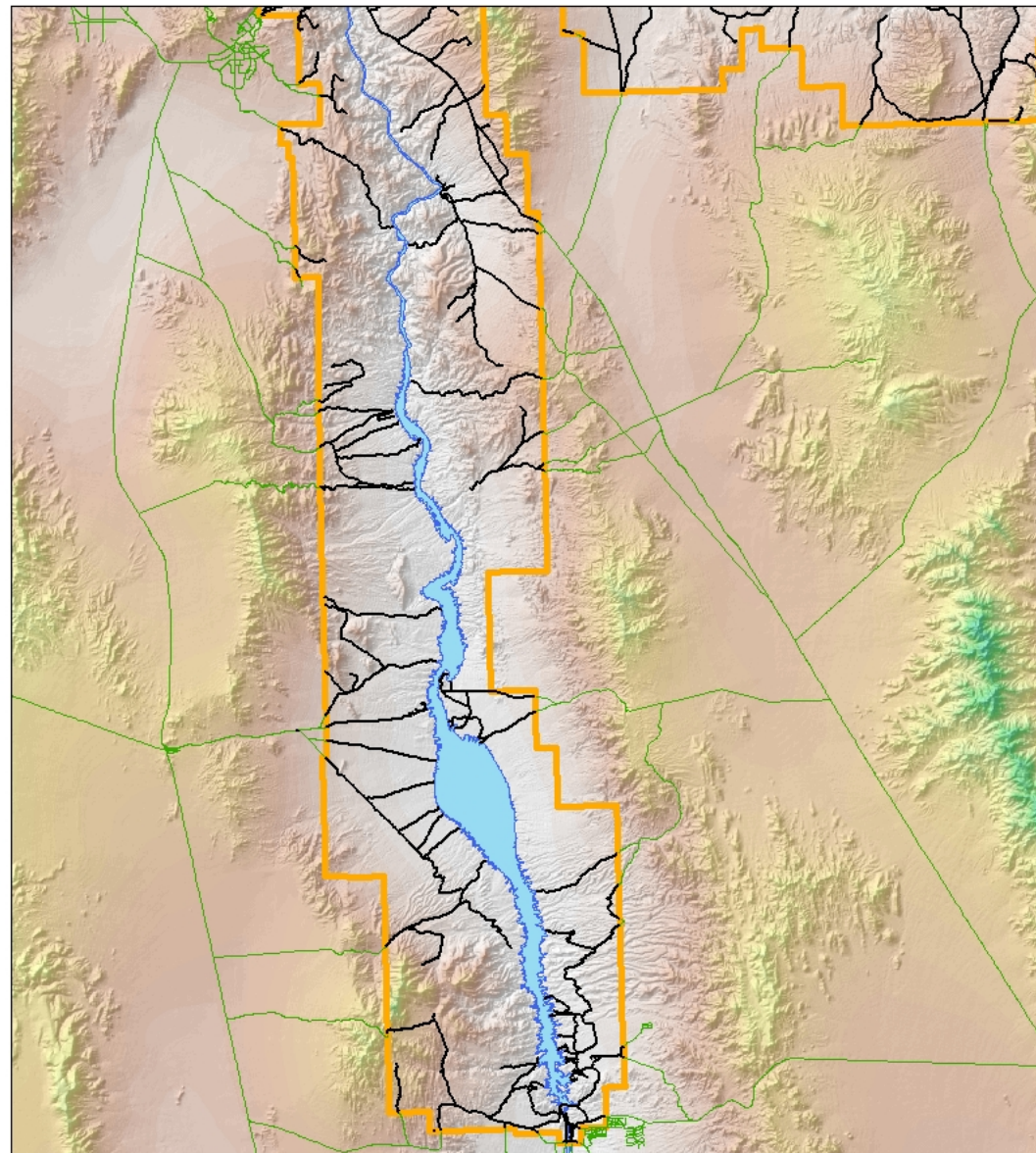
- State Boundary
- Roads Outside of Park
- Approved Roads
- Recreation Area Boundary
- Lake Mead



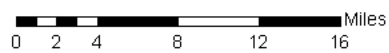
Mohave District

Lake Mead National Recreation Area

National Park Service
U.S. Department of the Interior



- Roads Outside of Park
- Approved Roads
- ▭ Recreation Area Boundary
- ▭ Lake Mead



Restoration Metrics

since 3/2008

- Signs
 - Installed: 112 signs
 - Monitored: 570 signs
- Barriers
 - Installed: 4,860.5 LF



Restoration Metrics

since 3/2008

- Restoration
 - Tracks (LF): 284,529
 - 53.9 miles (52.3 acres)
 - Area (SF): 289,015
 - 6.6 acres
 - Graffiti removed (SF): 1674



Interagency Database

- Southern Nevada Restoration Team (SNRT)
- National Park Service, Fish and Wildlife Service, Forest Service, Bureau of Land Management
- Data collection compatible across landscapes

Trends

- Illegal off-roading
 - Seasonal
 - Winter/Spring
 - Different areas of the park
 - Overton Area
 - AR 110, 111
 - Gold Butte
 - AR 114, 115
 - Boulder City Area
 - AR 51, 58, 58A, 59, 60
 - River Mountains
 - AR 154, 154A, 155, 155



Trends

- Vandalism higher in some areas of the park
 - Signs
 - Year round
 - Whole park
 - Graffiti
 - Summer
 - Nelson and Boy Scout Canyon
 - AR 45, 46, 47, 59
 - Barrier Destruction
 - Same seasons and areas as illegal off road



Future

- Continue monitoring roads, signs, fence, and barriers
- Continue our partnerships with BLM, FS, FWS
- Transfer of the database

Contacts

Alice C. Newton

[Alice corrine newton@nps.gov](mailto:Alice_corrine_newton@nps.gov)

Dara Scherpenisse

Dara_scherpenisse@nps.gov